

ZRICKS.COM

when we say white
it is only 15%

 **Goyal & Co.** |  **HARIYANA GROUP**
 creating landmarks since 1971
 BANGALORE . AHMEDABAD . MUMBAI

-  206, Barton Centre, MG Road, Bangalore 560001
-  +91 80888 33000, +91 80888 66000
-  orchidwhitefield@goyalco.com, mkt.bng@goyalco.com

www.goyalco.com

www.Zricks.com

rest 85% are fields



ZRICKS.COM

orchid
whitefield

1 - 2 - 2.5 - 3 bhk apartments

www.Zricks.com



orchid
whitefield

apartments amidst greens

Location!

Bangalore

The capital of Karnataka, has a history of over four hundred years, having been founded by Magadi Kempegowda in the year 1537 AD. with its strategic location as well as congenial climate, fertile land and adequate rainfall has grown steadily in its area and population.



Whitefield

Whitefield is an integral part of Bangalore. Whitefield remained a quaint little settlement to the east of Bangalore city till the late 1990s when the local IT boom turned it as a major suburb. It is now a major part of Greater Bangalore. The locale is well connected to the rest of Bangalore via its four lane roads through Mahadeypura and Varthur Road. The railway station and bus depot are also in close vicinity which makes the region easily accessible in more than one way. With the upcoming metro project proposal for the area which is adequately developed with the presence of malls, convenient stores, hospitals and education centres, whitefield is emerging to be 'the' lifestyle community.

orchid whitefield

Orchid Whitefield enjoys a unique locational advantage with walking distance from Whitefield main road and proximity to established IT parks, malls, hospitals and schools like Neev, DPS, TISB, Greenwood and Ryan International to name a few.



an oasis of greenery !



Orchid Whitefield is an oasis in itself. Its 7 acres sprawling campus is designed by the world renowned landscape architects with 85% of area in landscape. The campus is equipped with everything that the new age living can ask for... a sports complex with various games to a swimming pool from wifi gardens to senior citizen enclaves, from kids play areas to vehicle safe roads, the campus is an experience of active living for all age groups.



spoiled for choice!

While there has been lot more to define in Orchid Whitefield. Probably one of the most important aspect of our modern day living has be cherished by weaving together our cultures and value system. Hence, here homes are designed keeping an aspiring individual to a nuclear family to a family with grandparents; To live and enjoy life together and thus our homes are ranging from - ONE BED, TWO BED NANO, TWO BED REGULAR, TWO BED STUDY & THREE BEDROOMS to choose from.

A HOME FOR ONE AND EVERYONE at Orchid Whitefield !!





And when it comes to the recreation facilities and keeping you engaged, Orchid Whitefield stand apart with a sports complex, toddlers activity zone, fully loaded clubhouse, lush landscape gardens and a special area ear marked for the Senior living !!

Oh that's not all, for the working professional perhaps the first of its kind in a residential enclave we have introduced a Wifi Garden...

So, this is it! Whitefield you were waiting for... Come live and enjoy life with your loved ones at "ORCHID WHITEFIELD"

N  layout plan

EXISTING 12M WIDE ROAD, PROPOSED TO 15M WIDENING

TO CHANNASANDRA

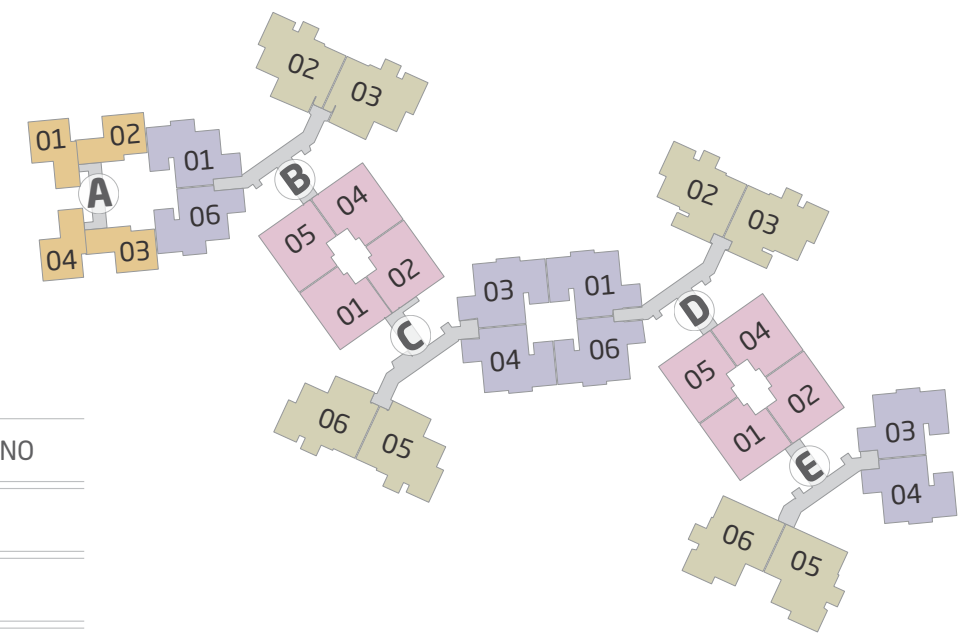
TO WHITEFIELD






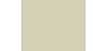
legends

1	arrival courtyard
2	seating courtyards
3	seating areas
4	multi-use lawn
5	basement entry
6	basement exit
7	tower entrance
8	transformer yard
9	kid's splash pad
10	kid's pool
11	adult's swimming pool
12	clubhouse with mini party hall / Activity Zone
13	kid's play
14	club house activity lawn with bbq counter
15	cricket pitch
16	multipurpose court
17	basketball practice court
18	outdoor gym
19	sports complex
20	organic converter
21	working pods
22	jogging track

1 BHK & 2 BHK ground floor units
 1 BHK - A 02, C 03, C 04, D 01, D 05, D 06, E 01
 2 BHK - E 03, E 04



legends

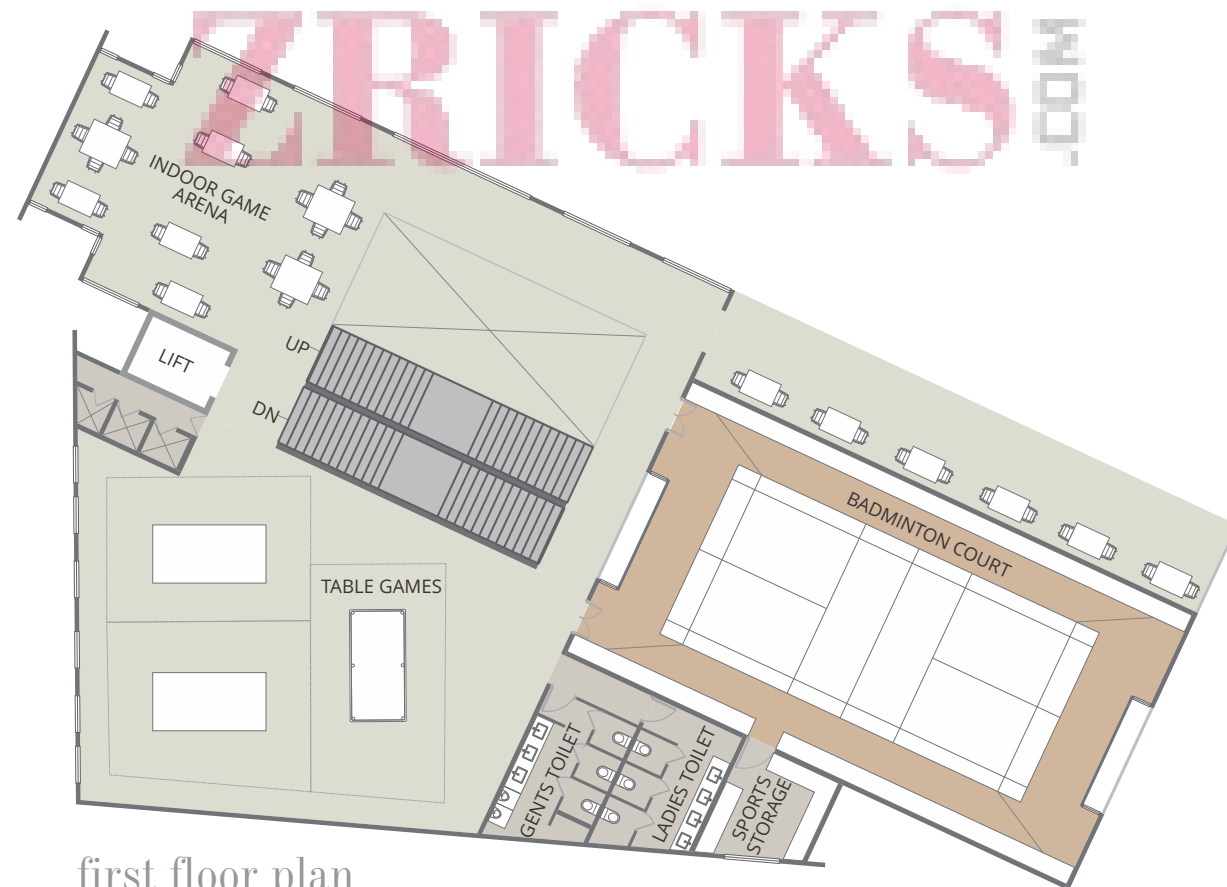
	2 BHK NANO
	2 BHK
	2.5 BHK
	3 BHK



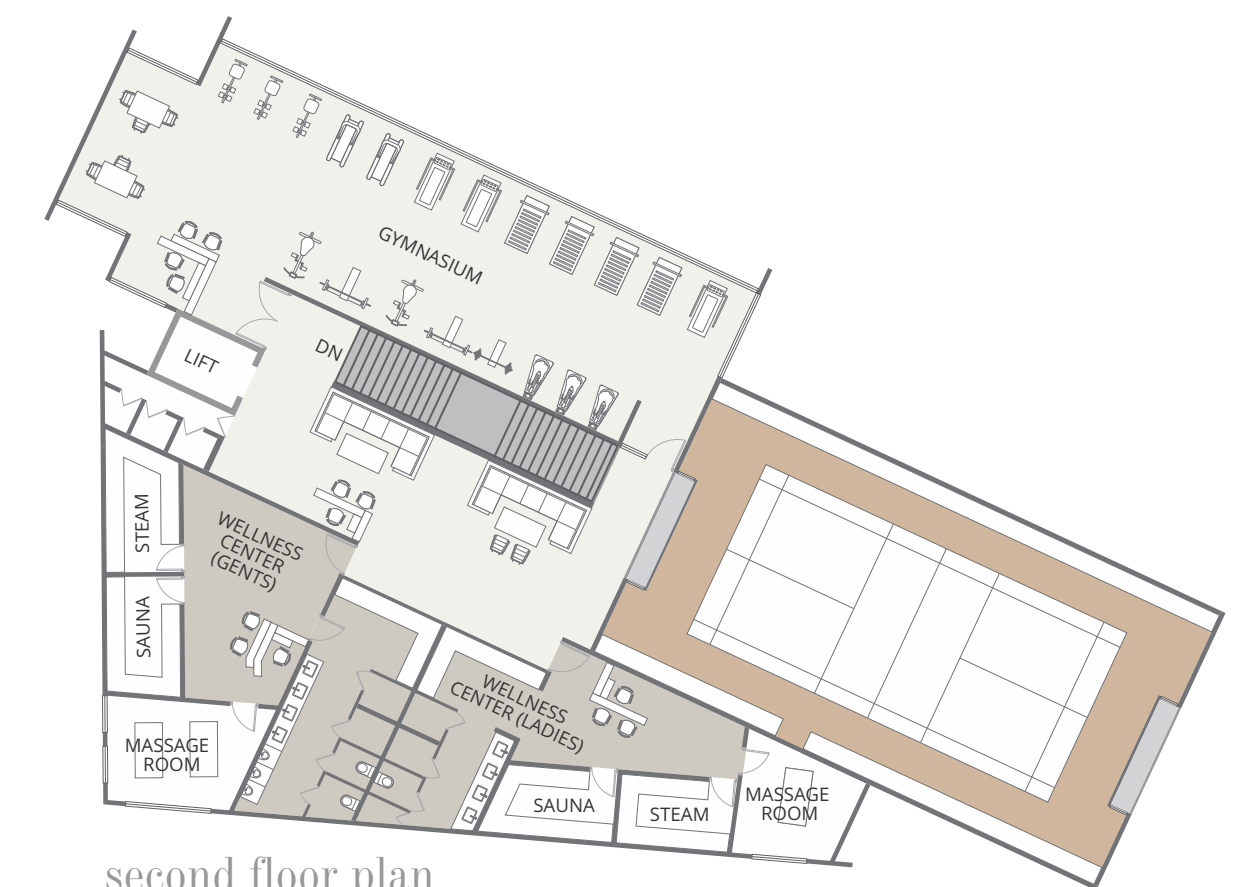
sports complex



ground floor plan



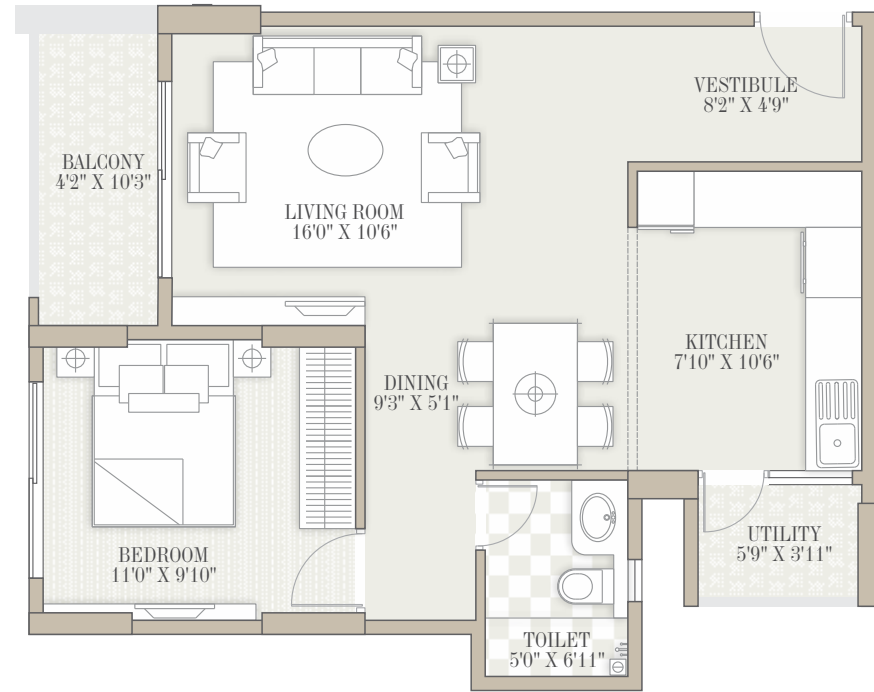
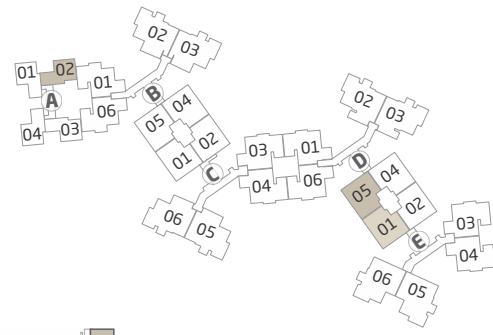
first floor plan



second floor plan

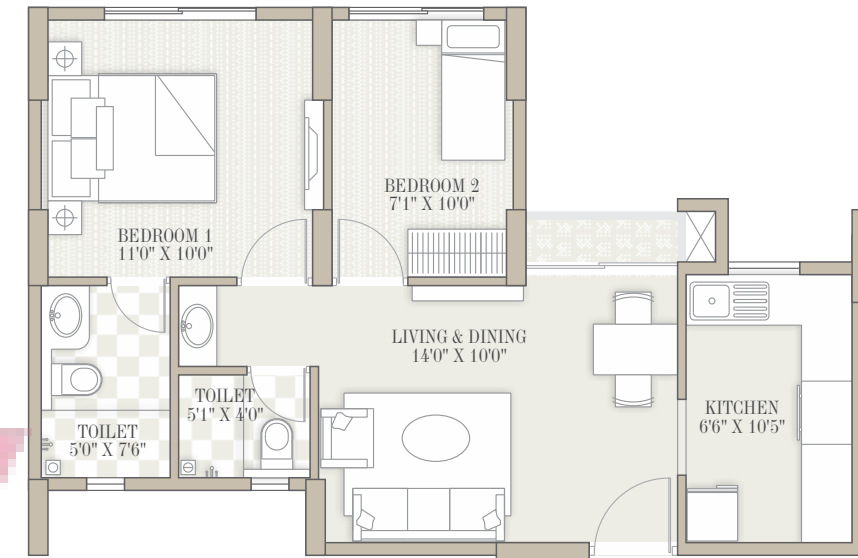
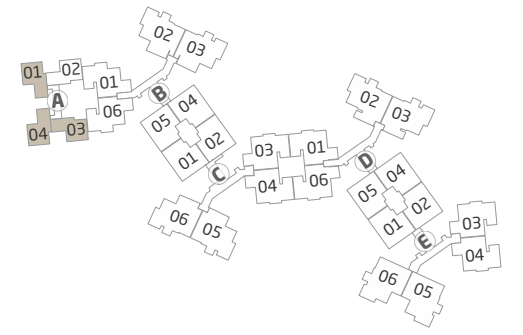
1 BHK

840 SQ.FT. (S.B.UP) 524 SQ.FT. (S.B.UP)
 D 005, E 001 A 002



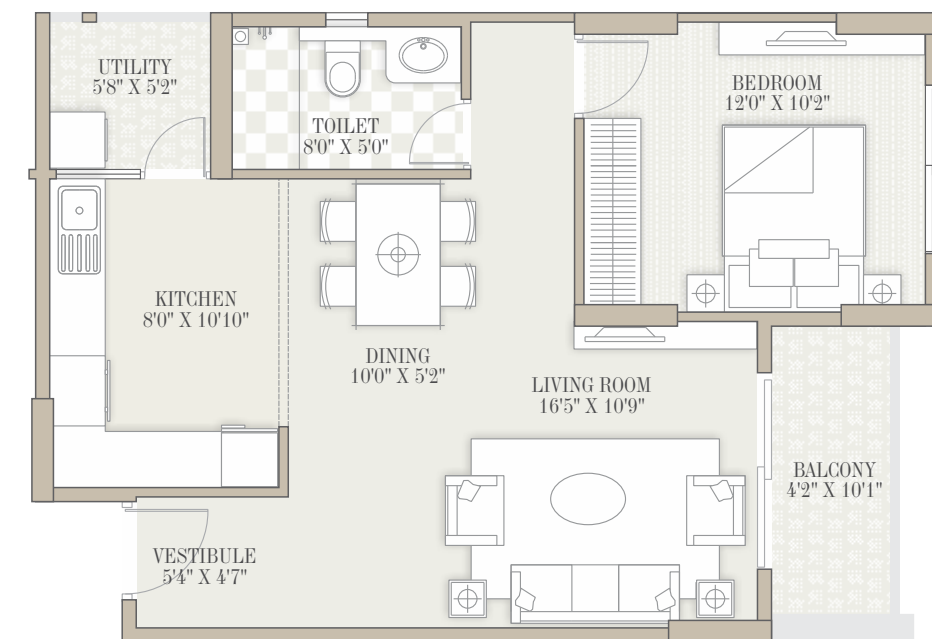
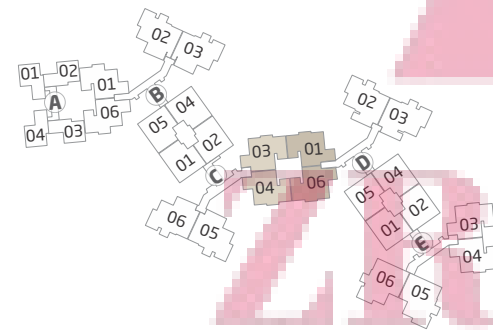
2 BHK NANO

704 SQ.FT. (S.B.UP)
 A 001, 003 & 004



1 BHK

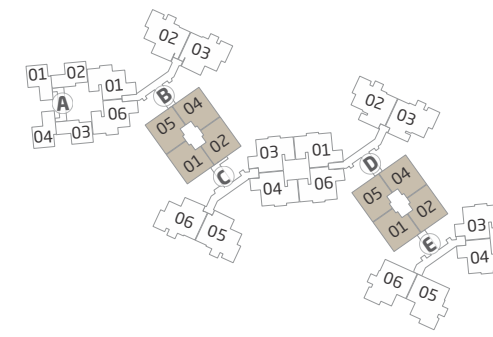
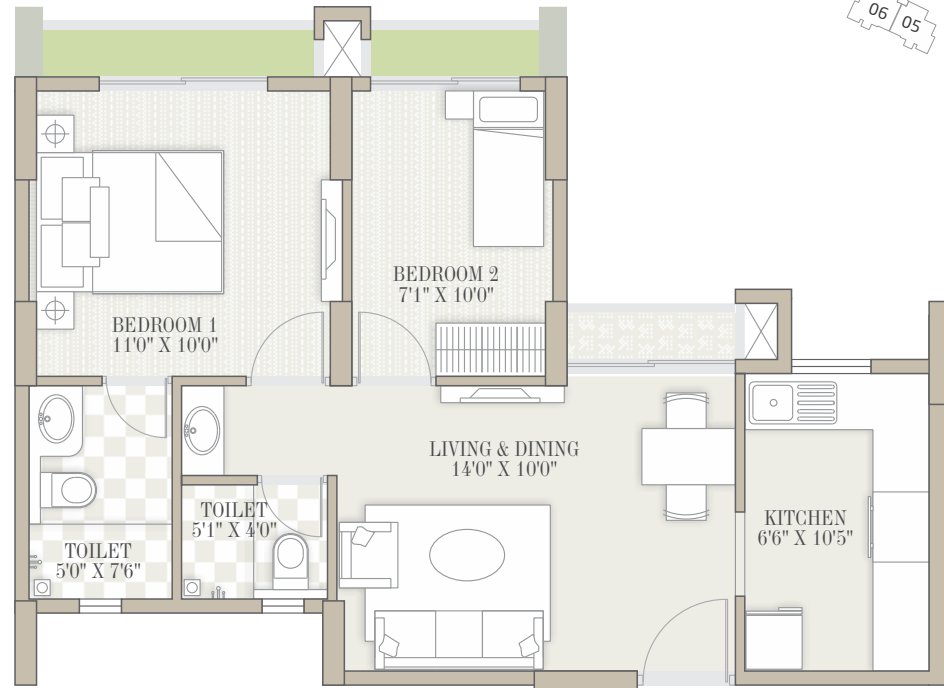
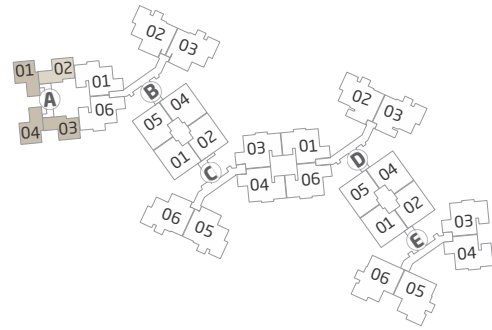
877 SQ.FT. (S.B.UP) 894 SQ.FT. (S.B.UP)
 D 001, D 006 C 003, C 004



orchid
whitefield

2 BHK NANO

750 SQ.FT. (S.B.UP)
A 101-901, A 102-902, A 103-903, A 104-904



2 BHK

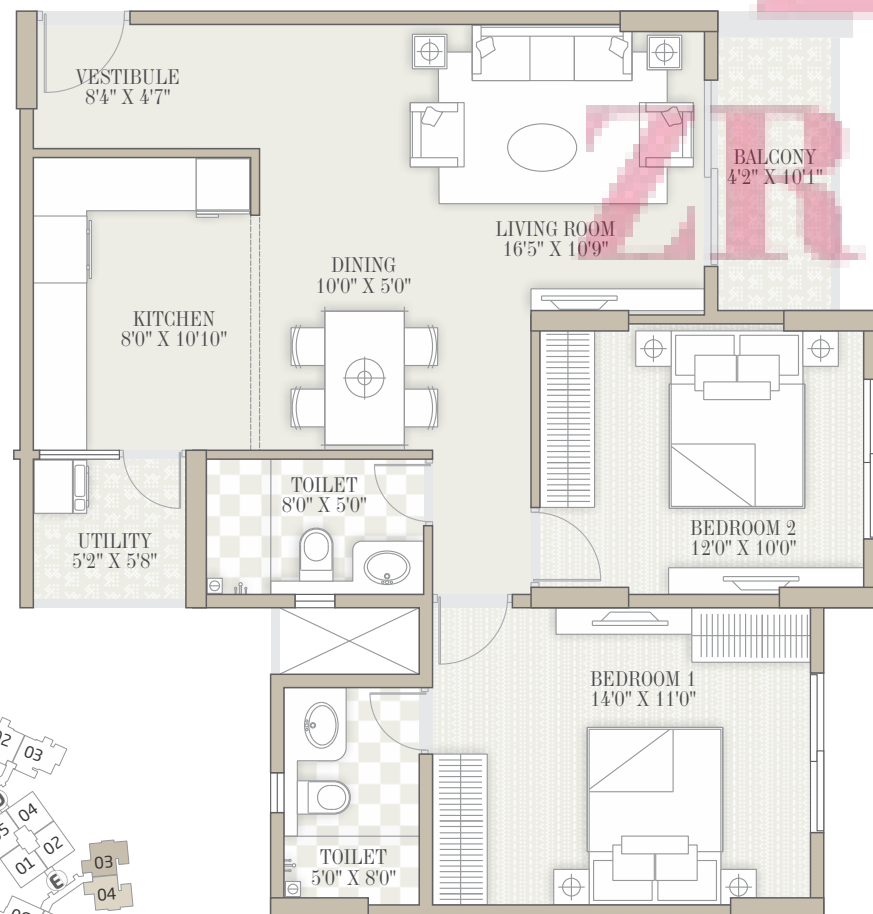
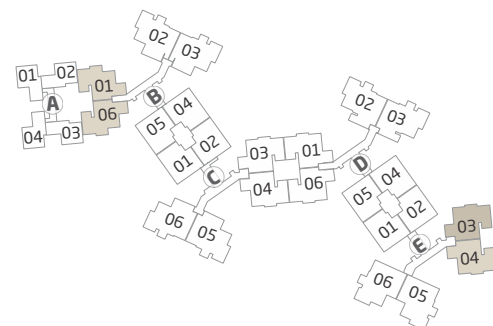
1173 SQ.FT. (S.B.UP)
B-104 to 1804 & 105 to 1805
C-101 to 1801 & 102 to 1802
D-104 to 1804 & 105 to 1805
E-101 to 1801 & 102 to 1802

1123 SQ.FT. (S.B.UP)
B-005, C-001



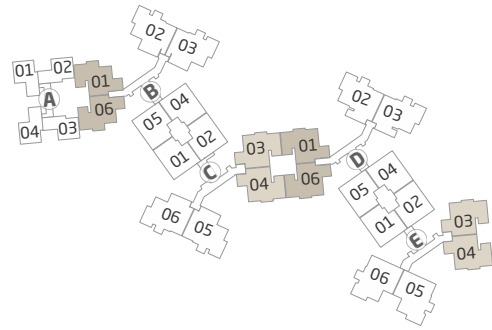
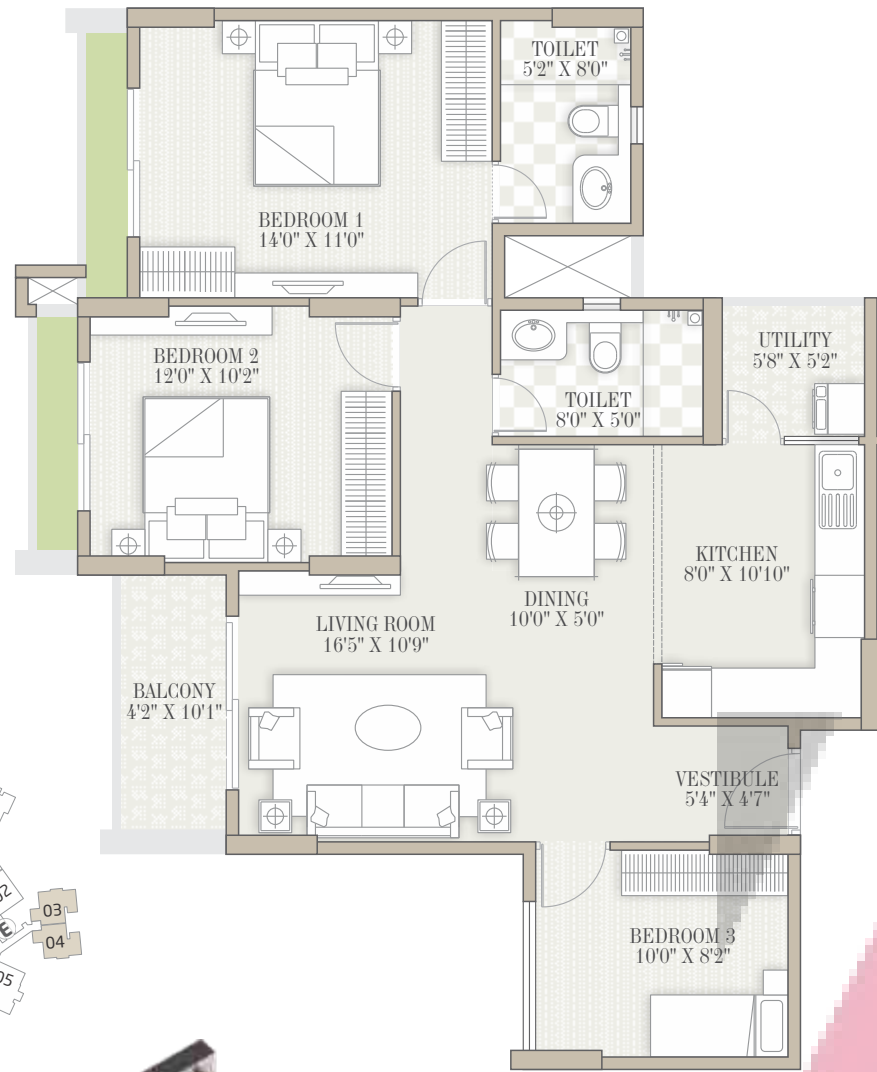
2 BHK

1180 SQ.FT. (S.B.UP)
E-003, E-004
1163 SQ.FT. (S.B.UP)
B-001, B-006



2.5 BHK

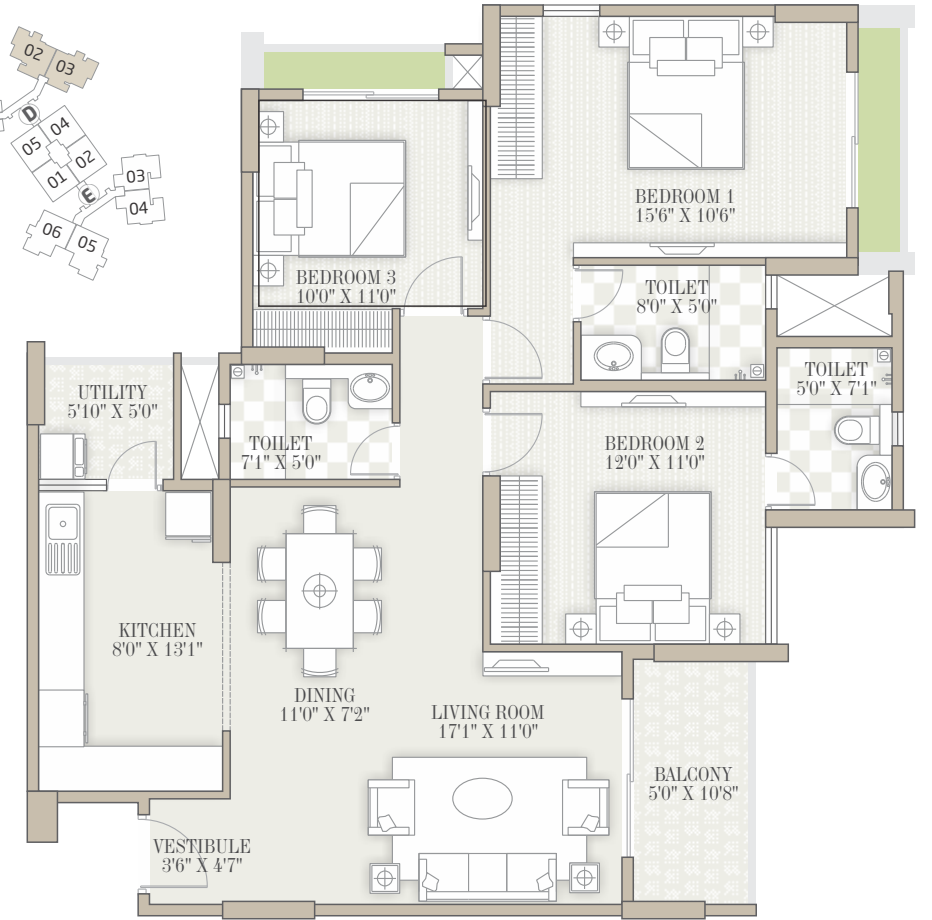
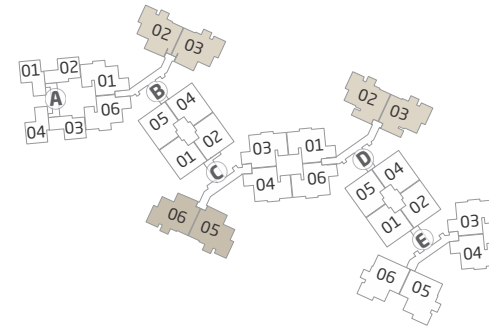
1350 SQ.FT. (S.B.UP)
 B-101 to 1801 & 106 to 1806
 C-103 to 1803 & 104 to 1804
 D-101 to 1801 & 106 to 1806
 E-103 to 1803 & 104 to 1804



3 BHK

1564 SQ.FT. (S.B.UP)

B-102 to 1802 & 103 to 1803
 C-205, 305, 505, 605, 805, 905, 1105, 1205, 1405, 1505, 1705, 1805
 C-206, 306, 506, 606, 806, 906, 1106, 1206, 1406, 1506, 1706, 1806
 D-202, 302, 502, 602, 802, 902, 1102, 1202, 1402, 1502, 1702, 1802
 D-203, 303, 503, 603, 803, 903, 1103, 1203, 1403, 1503, 1703, 1803

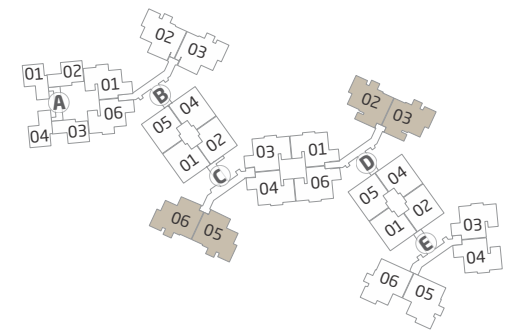
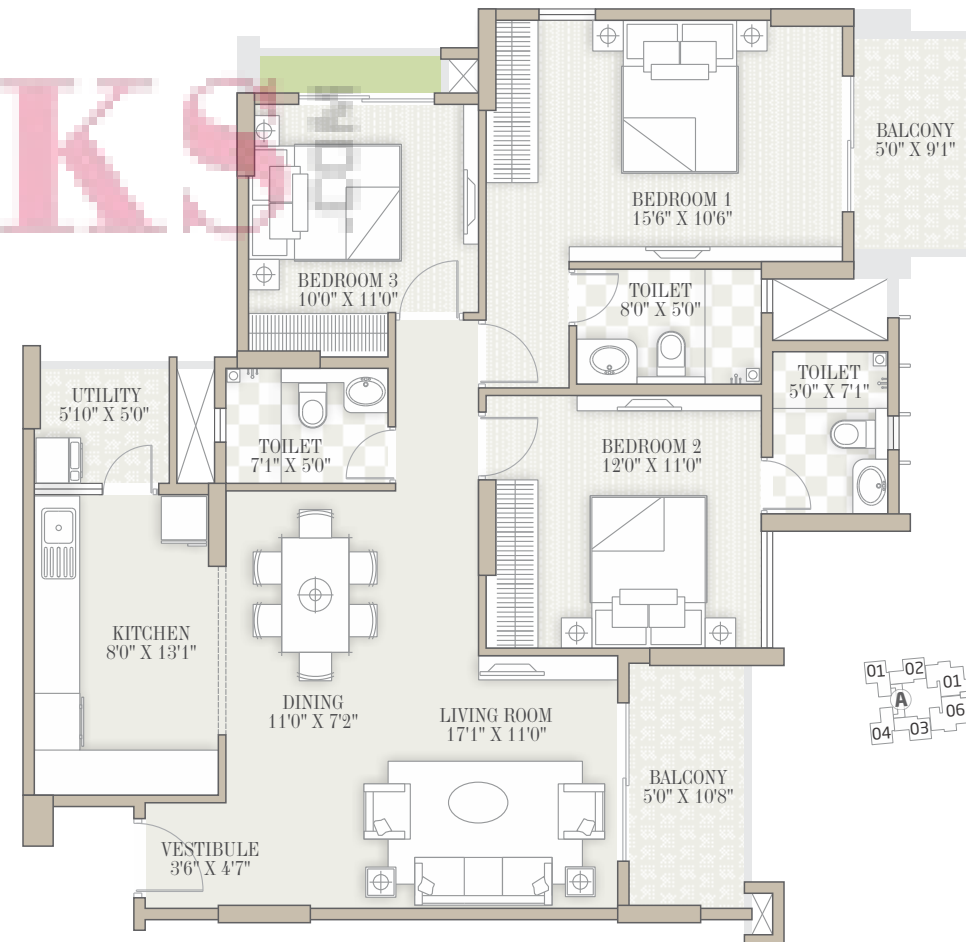


ZRICKS

3 BHK

1610 SQ.FT. (S.B.UP)

C-105,405,705,1005,1305,1605
 C-106,406,706,1006,1306,1606
 D-102,402,702,1002,1302,1602
 D-103,403,703,1003,1303,1603

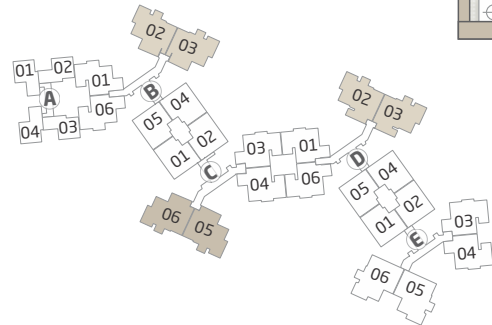
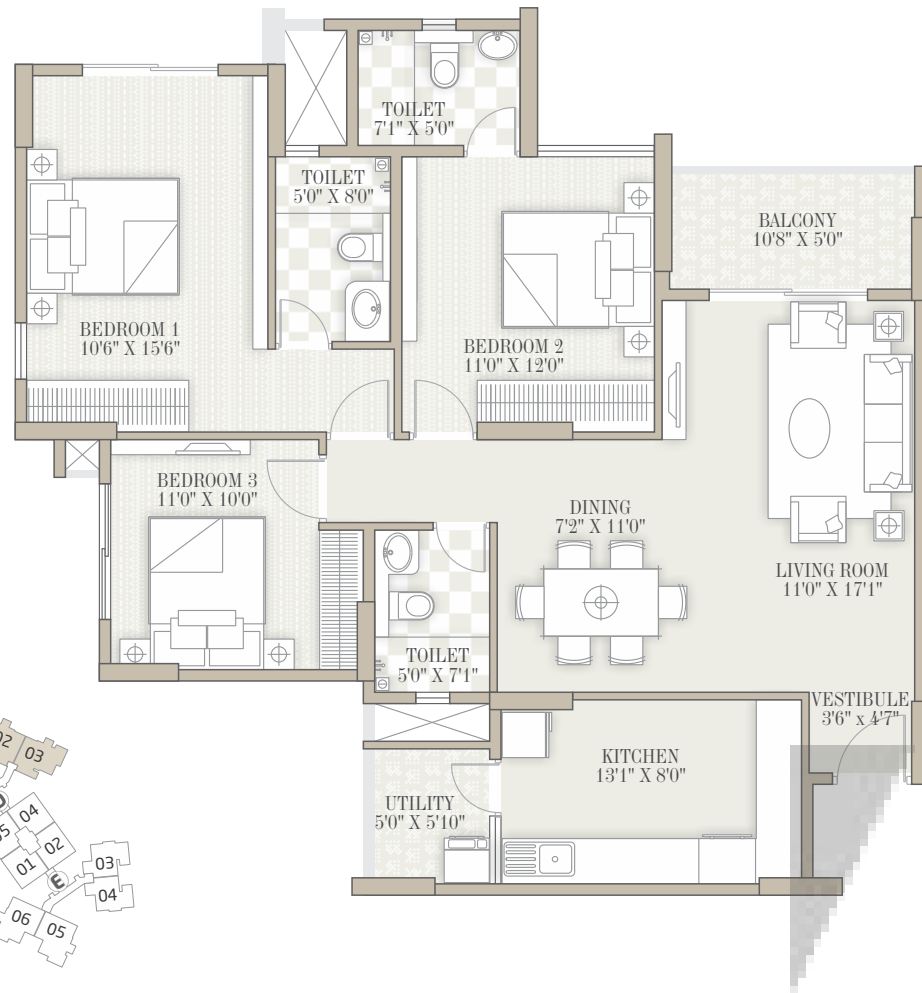


3 BHK

1520 SQ.FT. (S.B.UP)
B-002, C-005, C-006

1544 SQ.FT. (S.B.UP)
B-003

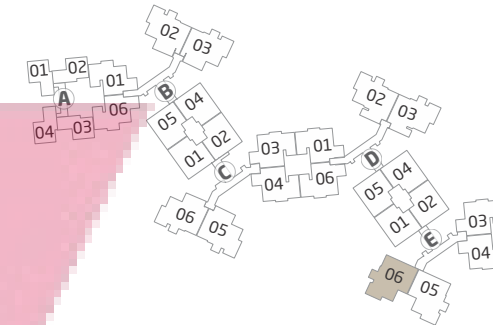
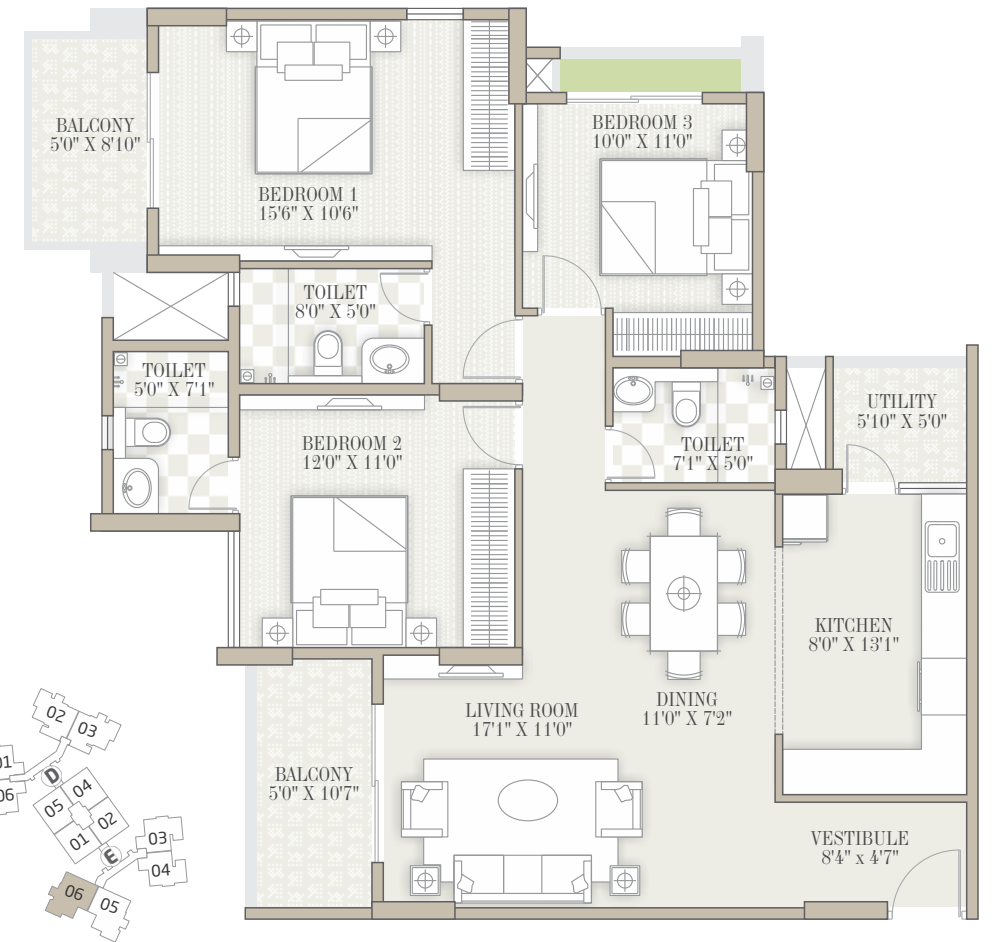
1537 SQ.FT. (S.B.UP)
D-002 & D-003



3 BHK

1639 SQ.FT. (S.B.UP)

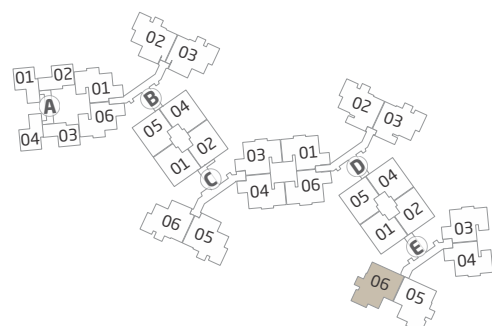
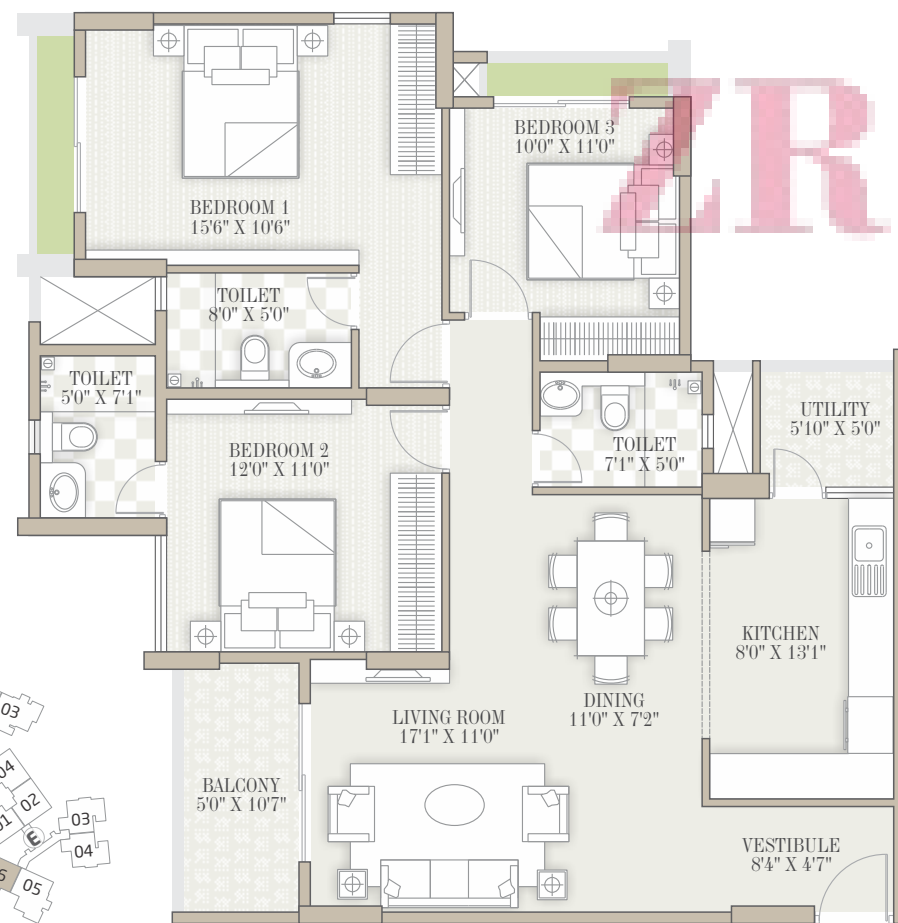
E-106, 406, 706
1006, 1306, 1606



3 BHK

1596 SQ.FT. (S.B.UP)
E-206, 306, 506
606, 806, 906, 1106
1206, 1406, 1506
1706, 1806

1545 SQ.FT. (S.B.UP)
E-006

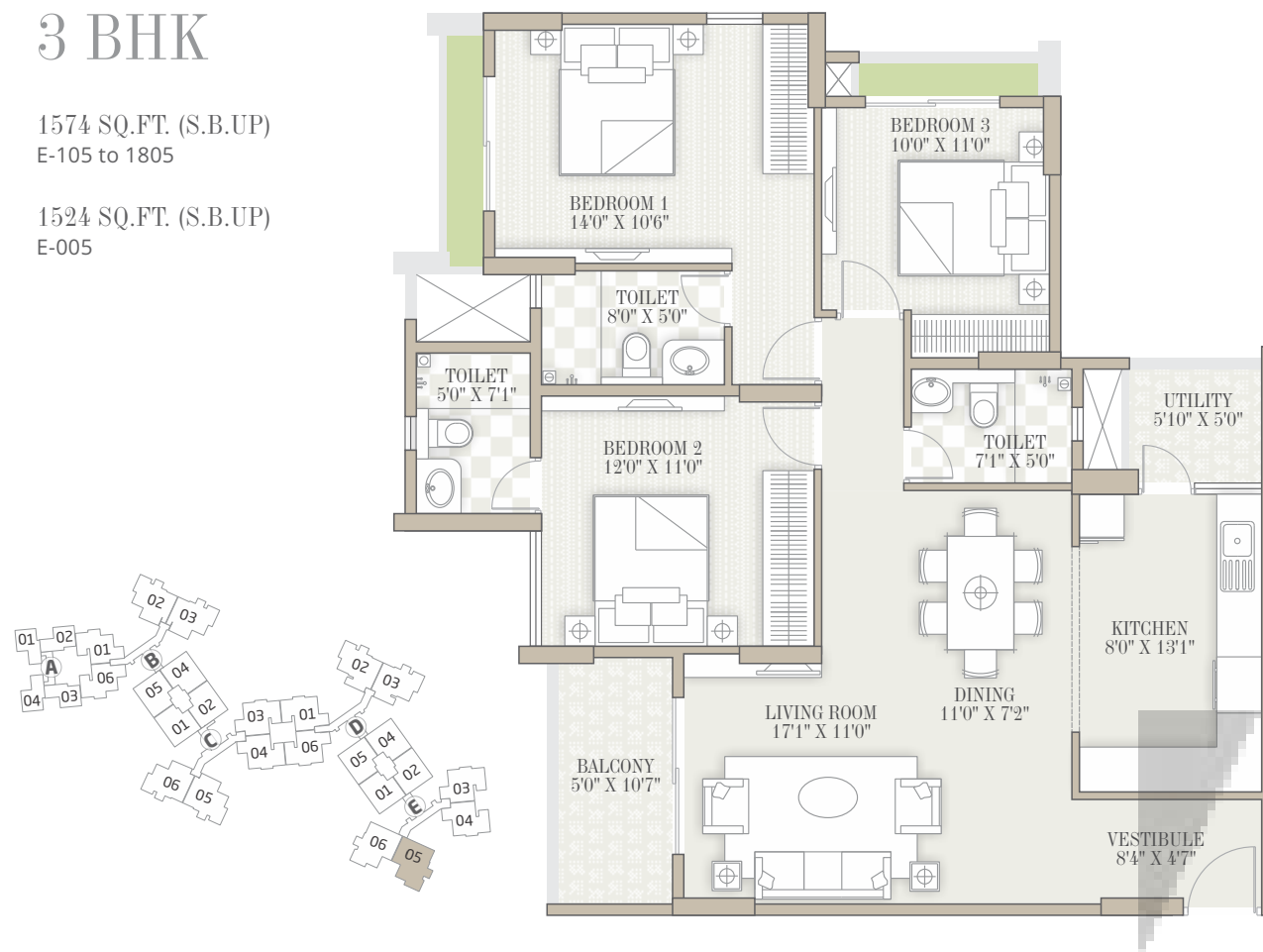


ZRICKS.COM

3 BHK

1574 SQ.FT. (S.B.UP)
E-105 to 1805

1524 SQ.FT. (S.B.UP)
E-005



specifications

WALL FINISHING

- Internal walls and Ceiling finished with Oil Bound Distemper
- External wall painted with weather coat / weather shield paints

FLOORING

- Vitrified Tiles for Complete flat
- Ceramic tiles for balconies and utility areas
- Lobbies with rustic / vitrified tiles
- Staircase with polished Kota stone / granite

DOORS & WINDOWS

- Main doors with Teak wood frames and teak finish flush doors
- Other doors with Sal wood frames with moulded panel doors
- Powder coated Aluminium / UPVC windows

KITCHEN

- Granite counter with single drain board sink
- Cladding with ceramic tiles 2' above kitchen platform

TOILETS

- Ceramic Tiles dado up to 7' height
- Grid false ceiling
- CP fittings of jaguar or equivalent
- EWC and ceramic basins of Cera or equivalent

ELECTRICAL

- 1 BHK / 2 BHK NANO : 3 KW KPTCL supply & 0.75 KW DG back up
- 2 BHK : 4 KW KPTCL supply & .75 KW DG back up
- 3 BHK : 5 KW KPTCL supply & 1 KW DG back up
- 100% DG back up for pumps, lifts and common area

WATER SUPPLY

- CPVC line for water supply
- UPVC / PVC lines for soil, drainage and external lines
- Sewage treatment plant
- Rain water harvesting system

LIFTS

- One 8 passenger lift and second 13 passenger lift

Special notes :

- The developers reserve the rights to change or revise or make any modifications, additions, omissions or alterations in the scheme as a whole or any part there of any details there in, at their sole discretion without prior notice. Such changes would be binding to all the members.
- All the architectural and interior views in brochure are computer graphic simulated interpretation of the actual property.
- All the dimensions given are approximate and from unfinished surfaces.
- This brochure is just for an easy presentation of the project and should not be treated as a legal document.
- Additional details as per attached leaflet here with.

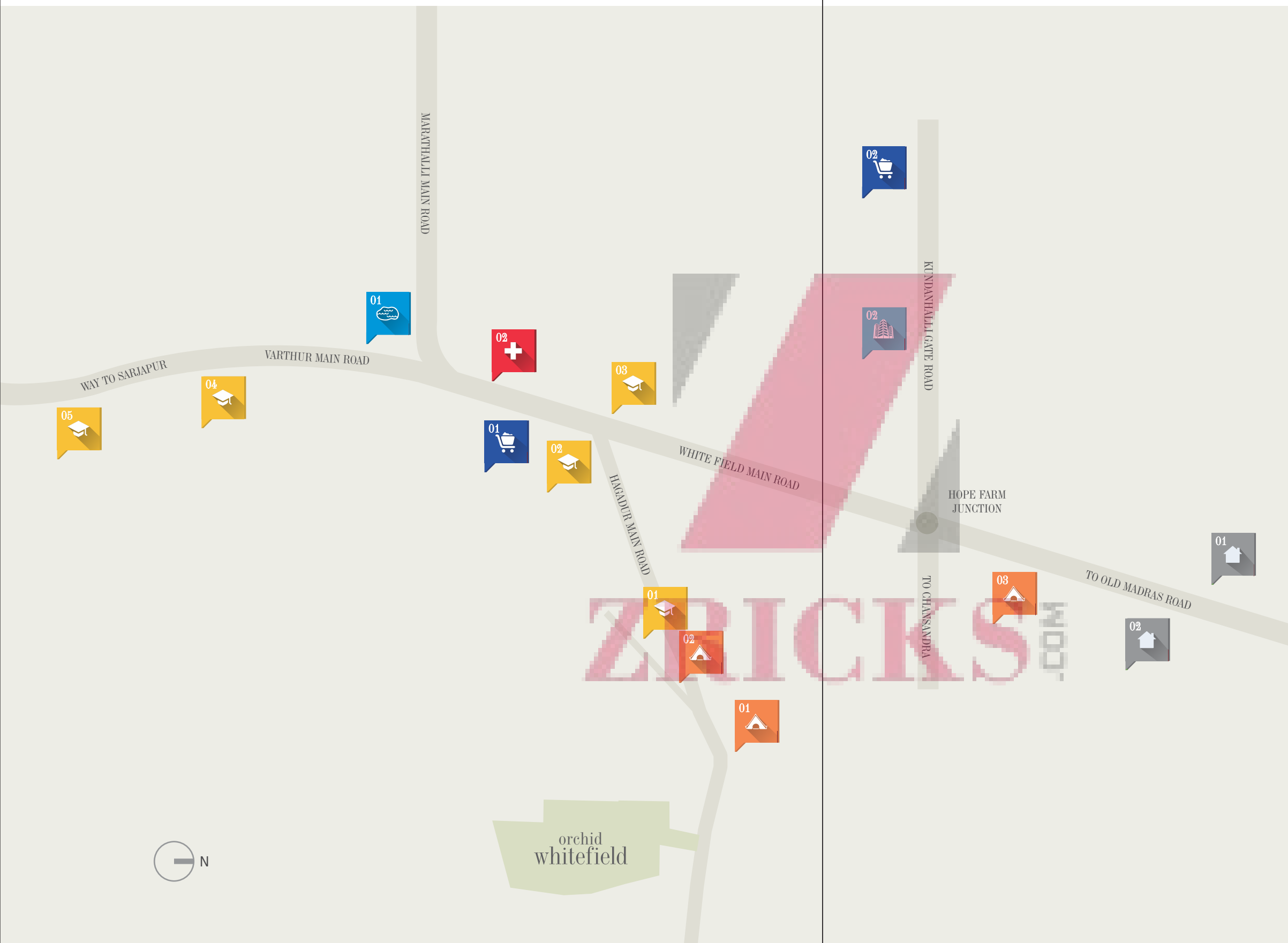
project highlights

- Spread on approximately 7 acres of land
- With 85% lungspace
- Built in Sports complex housing several exciting games facilities
- Clubhouse with indoor amenities
- Five blocks comprising (One Bed Home, 2 Bed Home Nano, 2 Bed Home 2.5 Bed Home, 3 Bed Home)
- Exclusive Lobby access to each wing
- Minimum vehicular movement on the surface with two basement parking space
- Dedicated recreational zones from all age group
- Wifi Garden for the working professional

orchid
whitefield

ZRICKS

key map



- 01 ORCHID PARK
- 02 ORCHID ENCLAVE
- 01 DELHI PUBLIC SCHOOL
- 02 CARMEL KIDS SCHOOL
- 03 NEEV SCHOOL
- 04 GREENWOOD SCHOOL
- 05 THE INTERNATIONAL SCHOOL BANGALORE
- COLUMBIA ASIA HOSPITAL
- 01 FORUM VALUE MALL
- 02 PARK SQUARE MALL
- INTERNATIONAL TECH PARK
- 01 MADHURAMMA TEMPLE
- 02 SHIVA TEMPLE
- 03 SATHYA SAI BABA ASHRAM
- VARTHUR LAKE

ARCHITECT
VENKATARAMANAN ASSOCIATES

STRUCTURAL CONSULTANT
SUPER STRUCTURES

LANDSCAPE ARCHITECT
CRACKNELL DUBAI.

- In the heart of Whitefield in close proximity to Forum Value Mall, Columbia Asia Hospital, Schools like (Neev, DPS, TISB, Greenwood, Ryan Intl) close proximity to the upcoming and established IT Parks.
- Walkin distance from the Whitefield main road.
- Unhindered Birds eye view from your home.
- Direct connectivity to Whitefield main road, sarjapura road, marathalli, hopefarm and old madras road.